

JIS-薄型·夹紧式

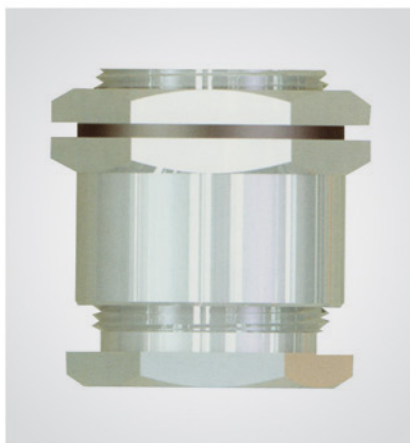
KVMTJ-铠装·夹紧式

填料函

Cable gland

填料函

Cable gland

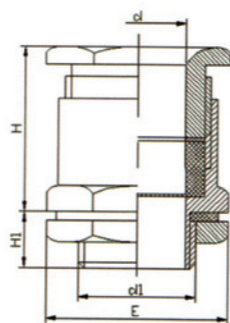


材质 Material	黄铜、黄铜镀镍或不锈钢 (订货时请指明) Brass, brass nickel plated or stainless steel (When ordering, please specify)		
特点 Features	适用于各种普通电缆 Applicable to all kinds of ordinary cable		
密封件 Seals	丁腈橡胶(NBR) NBR	防护等级 Degree of protection	IP56
工作温度 COT	-40°C~100°C		



- 1.可配多层密封圈以便更大范围满足电缆外径。
- 2.可配凹型密封圈可更好的夹紧密封电缆。

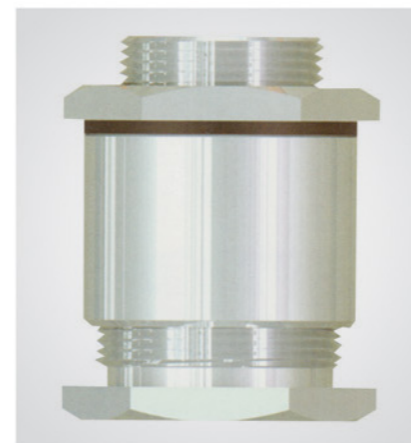
- 1.Can be equipped with multi-layer sealing ring in order to greater range to meet the outer diameter of cable
- 2.Can be equipped with concave sealing ring in order to better clamping sealing cable



订购示例 (e.g.): BTJ24

单位:mm

规格型号 Gland size	d	d1	H	H1	E	适用电缆外径 Cable size
BTJ13	13	M18X1	28	9	25	6-12
BTJ16	16	M22X1	29	9	30	12-15
BTJ19	19	M24X1	29	10	32	15-18
BTJ22	22	M27X1	30	10	37	18-21
BTJ24	24	M30X1.5	35	11	39	21-23
BTJ26	26	M33X1.5	37	11	43	23-25
BTJ28	28	M35X1.5	37	11	46	25-27
BTJ30	30	M37X1.5	37	11	48	27-29
BTJ34	34	M41X1.5	38	11	52	29-33
BTJ38	38	M45X1.5	42	12	59	33-37
BTJ42	42	M51X2	43	12	63	37-41
BTJ48	48	M57X2	43	12	71	41-47
BTJ54	54	M63X2	43	12	80	48-53
BTJ60	60	M70X2	45	12	90	53-59

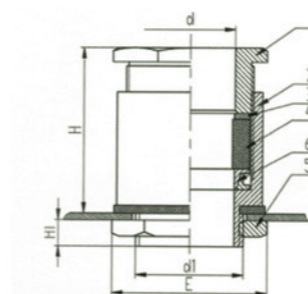


材质 Material	黄铜、黄铜镀镍或不锈钢 (订货时请指明) Brass, brass nickel plated or stainless steel (When ordering, please specify)		
特点 Features	适用于各种铠装电缆 Applicable to all kinds of armoured cable		
密封件 Seals	丁腈橡胶(NBR) NBR	防护等级 Degree of protection	IP56
工作温度 COT	-40°C~100°C		



- 1.可配多层密封圈以便更大范围满足电缆外径。
- 2.可配凹型密封圈可更好的夹紧密封电缆。

- 1.Can be equipped with multi-layer sealing ring in order to greater range to meet the outer diameter of cable
- 2.Can be equipped with concave sealing ring in order to better clamping sealing cable



- 1- 螺母;
- 2- 底座;
- 3- 垫圈;
- 4- 橡胶填料;
- 5- 背帽;
- 6- 铠装环



订购示例 (e.g.): KVMTJ-24

单位:mm

规格型号 Gland size	d	d1	H	H1	E	适用电缆外径 Cable size
KVMTJ8	8	M14X1	27	10	22	5-7
KVMTJ13	13	M18X1	30	11	25	6-12
KVMTJ16	16	M22X1	36	11	34	11-15
KVMTJ19	19	M27X1.5	37	14	39	14-18
KVMTJ24	24	M30X1.5	41	14	46	17-23
KVMTJ28	28	M36X2	44	14	52	22-27
KVMTJ34	34	M42X2	49	14	57	26-33
KVMTJ42	42	M52X2	54	14	71	32-41
KVMTJ50	50	M58X2	54	20	78	40-49
KVMTJ58	58	M68X3	59	19	90	48-57
KVMTJ70	70	M78X3	59	22	102	56-69